

# APIS IQ-Tools

## Installation Manual

Netzwerkinstallation

Unattended Install

Installation of Service-Packs

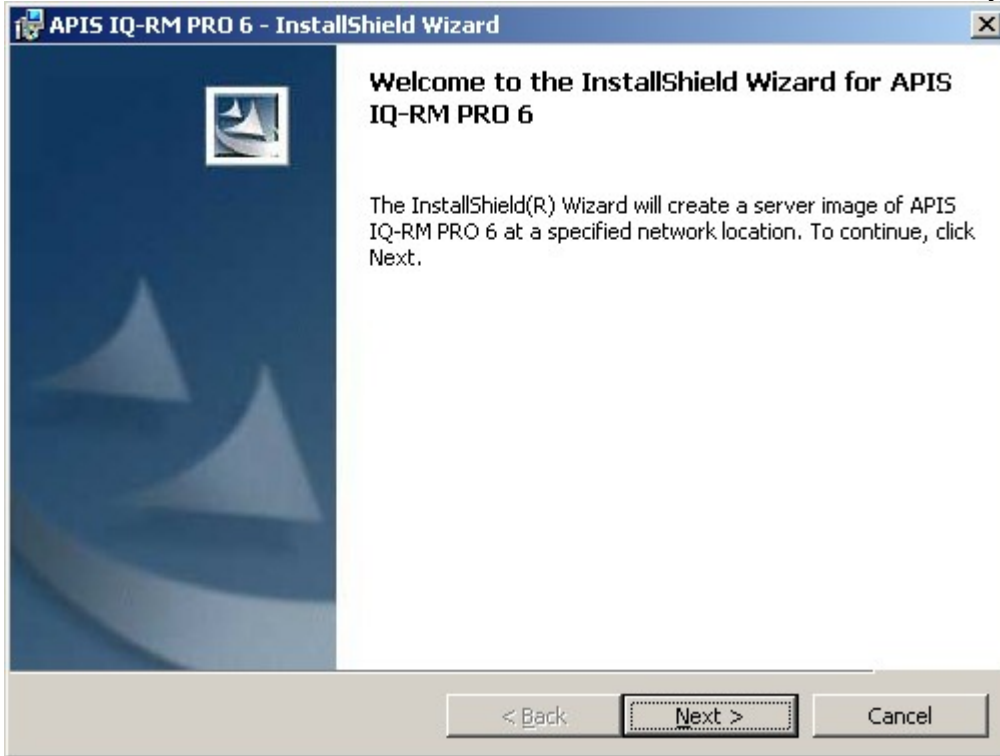
APIS Informationstechnologien GmbH

## Installing a network version:

### Option 1: Guided installation

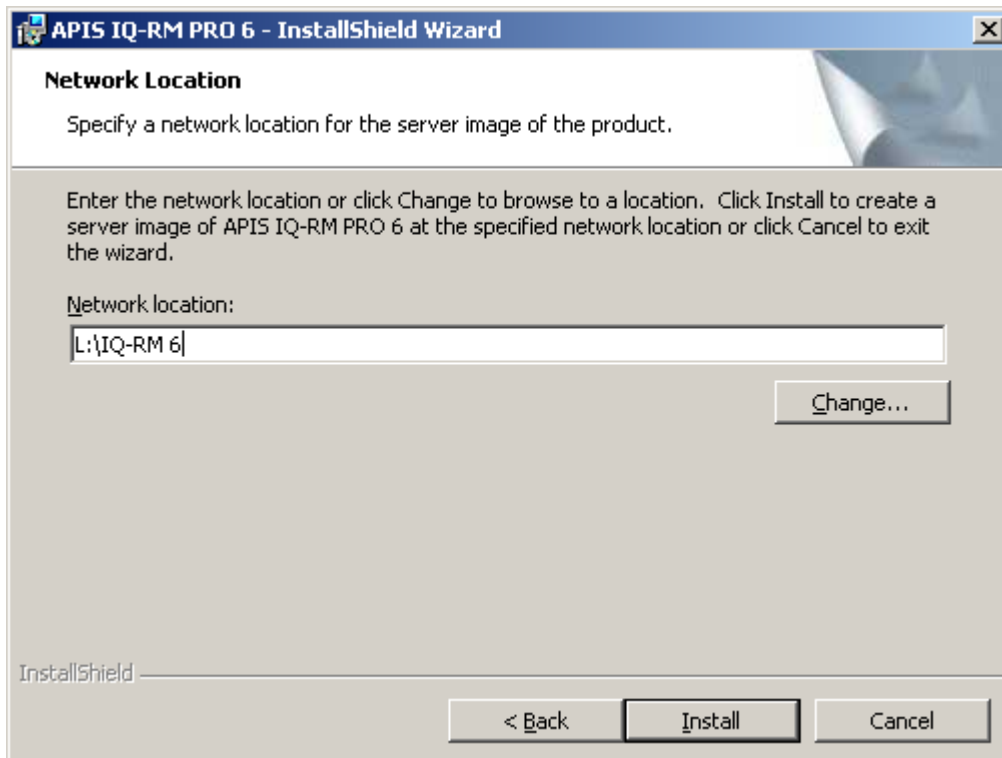
#### **Step #1: Installing the files on the file server**

Insert the installation CD and double click "SETUP.EXE", if the CD does not start automatically.



Choose a directory in the following dialog, where the files, called the "server image", should be installed. By clicking the "Change" button you can select or create a directory for the installation. Installing the files into a root directory is not recommended.

Clicking the "Install" button will start the installation process. Only files are being copied into the selected directory. The registration database will not be modified, nor will an uninstall entry in "installed programs" be created. Uninstalling the server image is being done, by deleting the directory containing the corresponding files.



### **Step #2: Installing the client**

The installation process associates the file extension and copies some files to the local hard disk, i.e. the help files (using help files from a file server requires to lower security settings).

The installation on the client computer is being done, by double clicking the “IQTOOLS.MSI” from a network drive where the files reside, that were installed by step #1. The client installation creates an entry in “installed programs” section, that allows you to uninstall the client part of the software.

## Option #2: Installing via command line

Apart from the usual procedure via Setup.exe there is the possibility to perform an unattended installation. This eases the installation process for large scale roll outs. The lines marked as “command” should be entered into the “Run...” dialog (Start menu|Run...) or the command window (Accessories).

### 1) Installation of the network components (network version):

Command:

```
msiexec /qn /a "X:\DISK1\IQ-Tools.msi" TARGETDIR="Y:\IQ-RM 6"
```

"X:\DISK1\IQ-Tools.msi" references the location of the source MSI file, e.g. CD. The parameter TARGETDIR defines the target directory for the network installation.

### 2) Installation of the components of the local installation (local version / client setup):

Command:

```
msiexec /qn /i "X:\DISK1\IQ-Tools.msi" INSTALLDIR="C:\IQ-RM 6" OVERRIDEDEFAULTTARGET=1
```

In case of a local installation "X:\DISK1\IQ-Tools.msi" references the location of the source MSI file, e.g. CD. In case of a network version the path to the "IQ-Tools.msi" of the server image has to be inserted. The parameter INSTALLDIR defines the target directory, OVERRIDEDEFAULTTARGET=1 always has to be included, otherwise the APIS IQ Software is installed into the default directory, e.g. "C:\Program Files\APIS\IQ-RM PRO 6".

# Installing a Service Pack

## **1) Updating the components of the network installation (for network version only):**

**Installing a service pack for the server image can only be done via command line!**

Command:

```
msiexec /a "Y:\IQ-RM 6\IQ-Tools.msi" /p ServicePack.msp
```

This command updates the network installation (part of the software which is stored on the server).

In this example "Y:\IQ-RM 6\IQ-Tools.msi" is the path to the MSI file of the server installation and "ServicePack.msp" is the service pack file. If this file is not in the current directory, the full path name has to be specified.

## **2) Updating the components of the local installation:**

### **Option 1: Guided installation**

Double click the file "ServicePack.msp" to start the installation of the service pack. This updates the local parts of APIS IQ Tools, like all components of a single user version or the local help files of the network version. All suitable IQ Versions that are installed on the workstations are recognized and updated automatically. An additional selection of a target directory is not required.

### **Option 2: Installation via command line**

Command:

```
msiexec /update ServicePack.msp
```

Like option #1, but can be performed via command line.