

# **APIS IQ-Software**

## **Transfer of CSS Functional Safety data from CARM-NG into IQ-Software V8.0**

Step-by-step guide

Export from CARM-NG  
Import into APIS IQ-Software V8.0

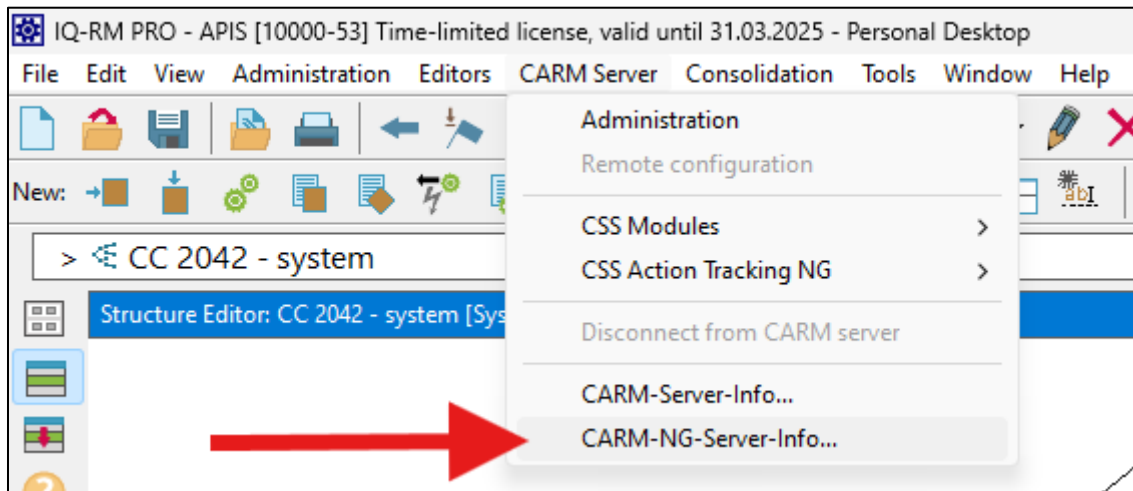
**Contents**

Export from CARM-NG .....3  
    Prerequisites .....3  
    Export from Services Manager .....5  
Import into IQ-Software V8.0.....8  
    Data Manager .....8

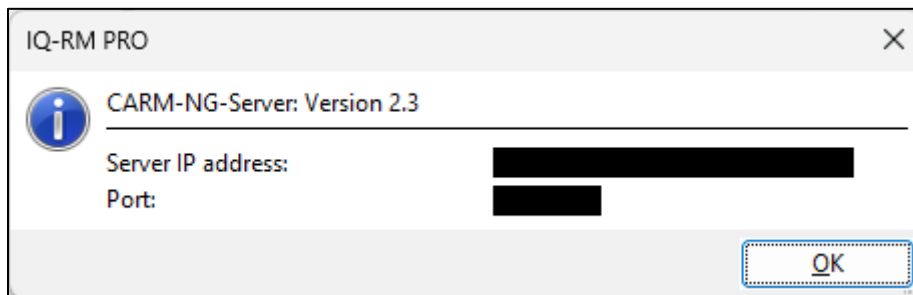
# Export from CARM-NG

## Prerequisites

Make sure you're connected to your CARM-NG-Server. Start your APIS IQ-Software V7.0.

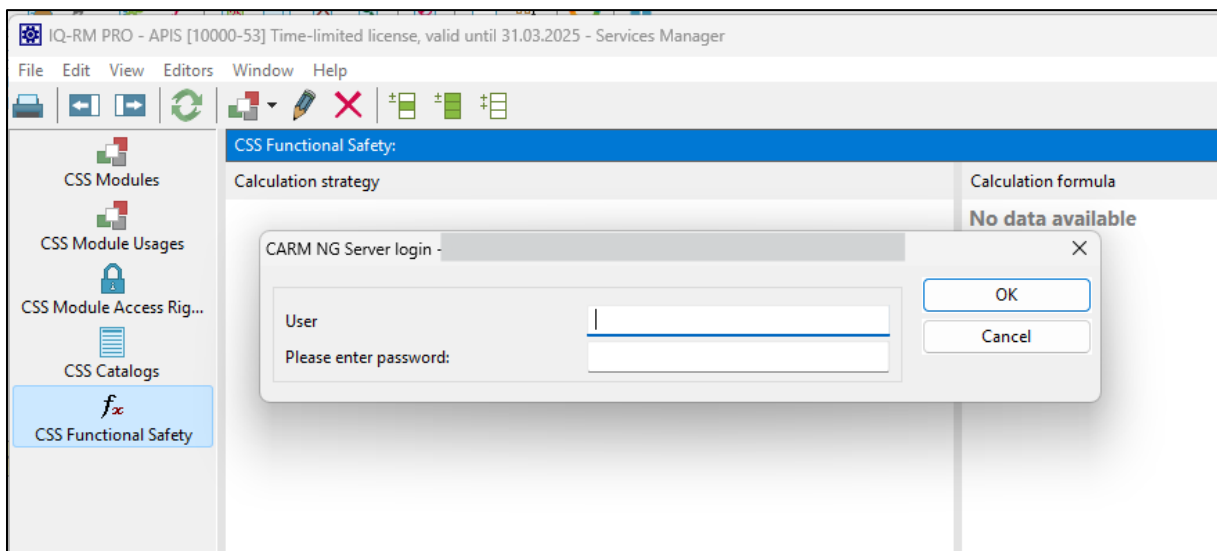
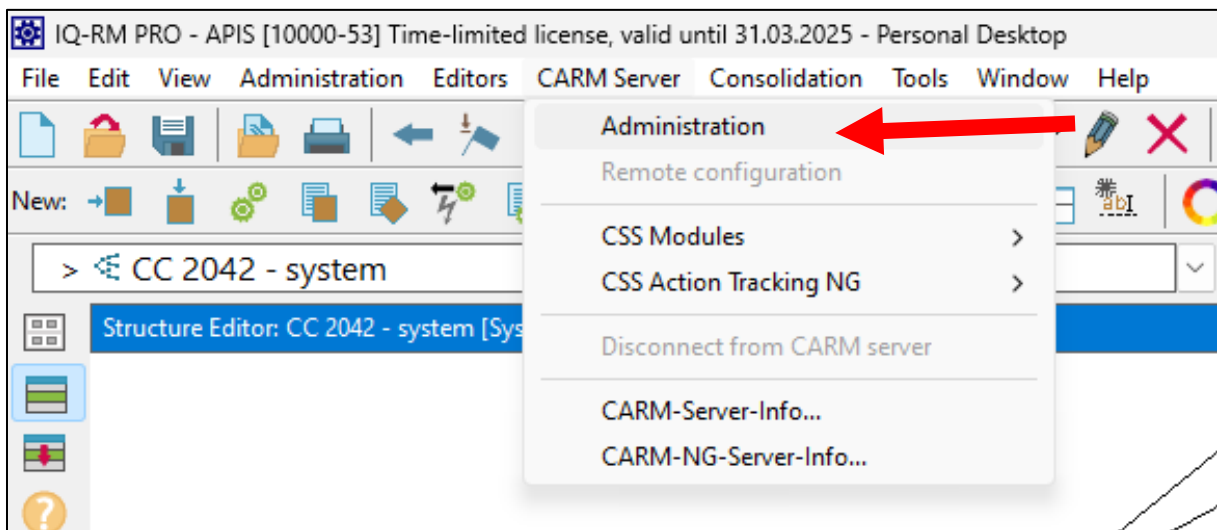


It should show a valid connection:



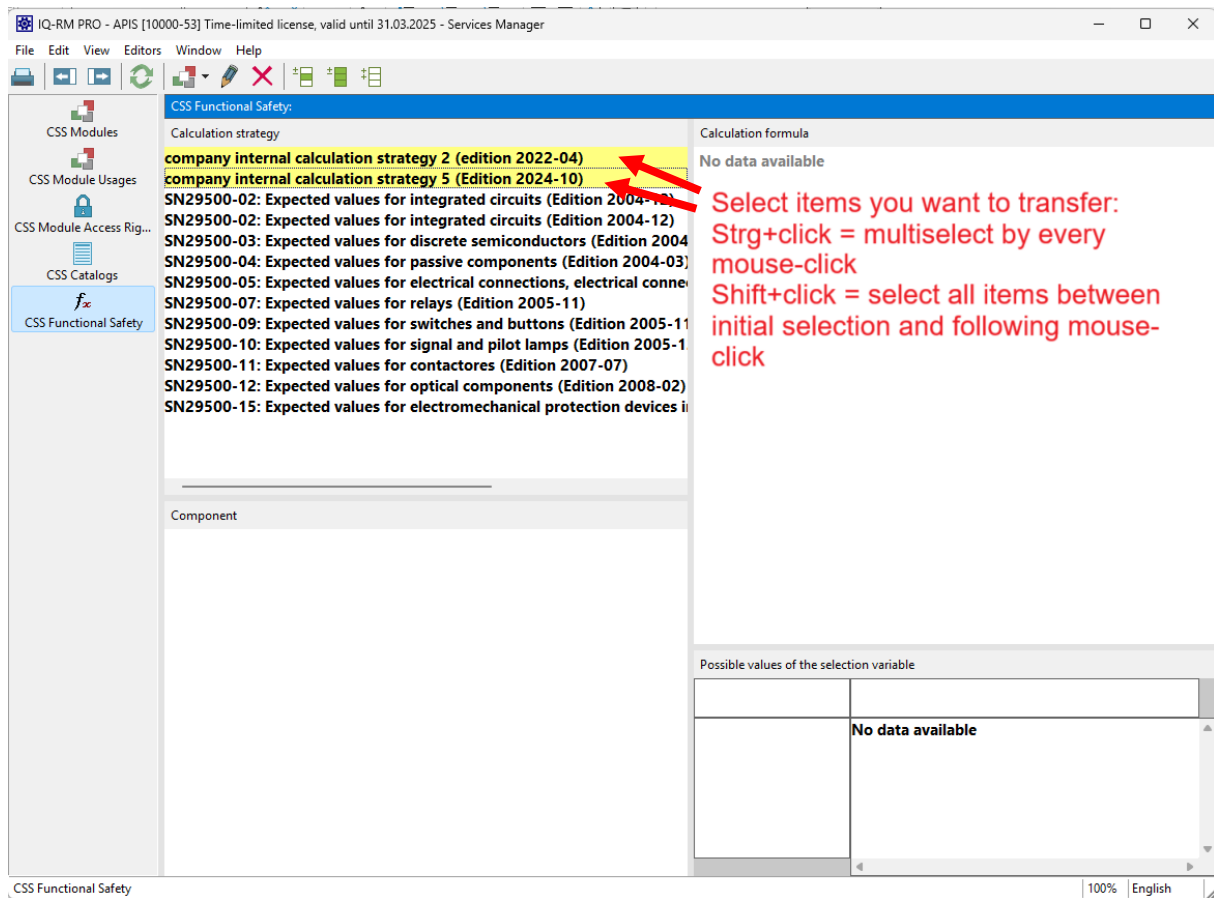
If the connection is not shown, establish the connection according to the CARM-NG manual.

Go to CARM Server > Administration and login to your CARM-NG-Server:



## Export from Services Manager

In the Services Manager, go to CSS Functional Safety and select the items you want to transfer.



Note: If you're using multiple standards and/or internal standards besides official standards, it is useful to do multiple exports and group them according to standards, for example

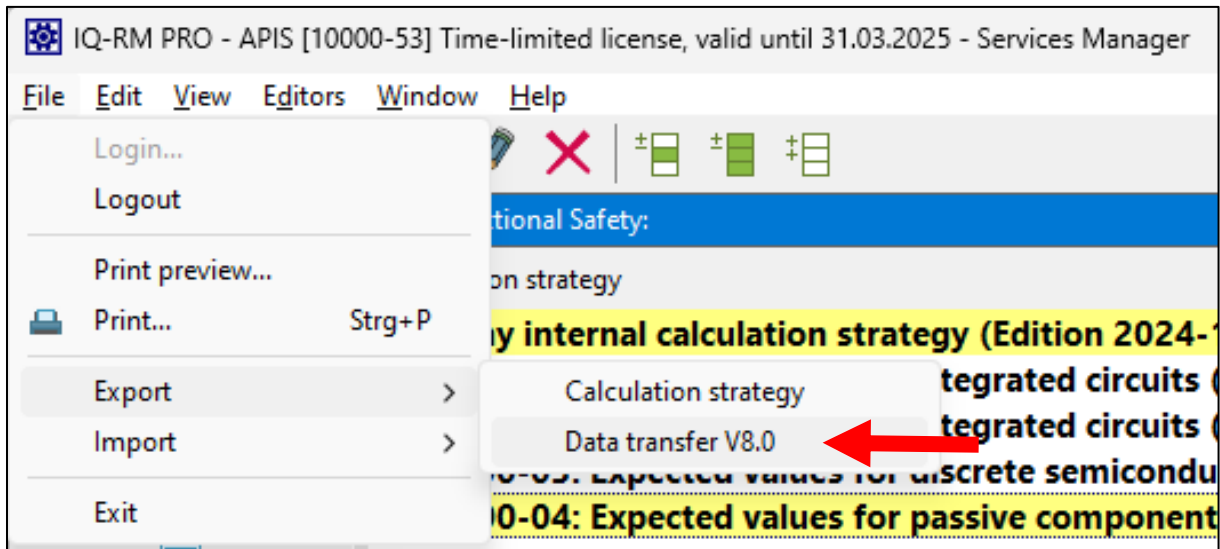
- SN29500
- Company x internal calculation standard(s)

This grouping is because in the IQ-Software V8.0 the calculation strategies are grouped into

1. Standards
2. Calculation strategy

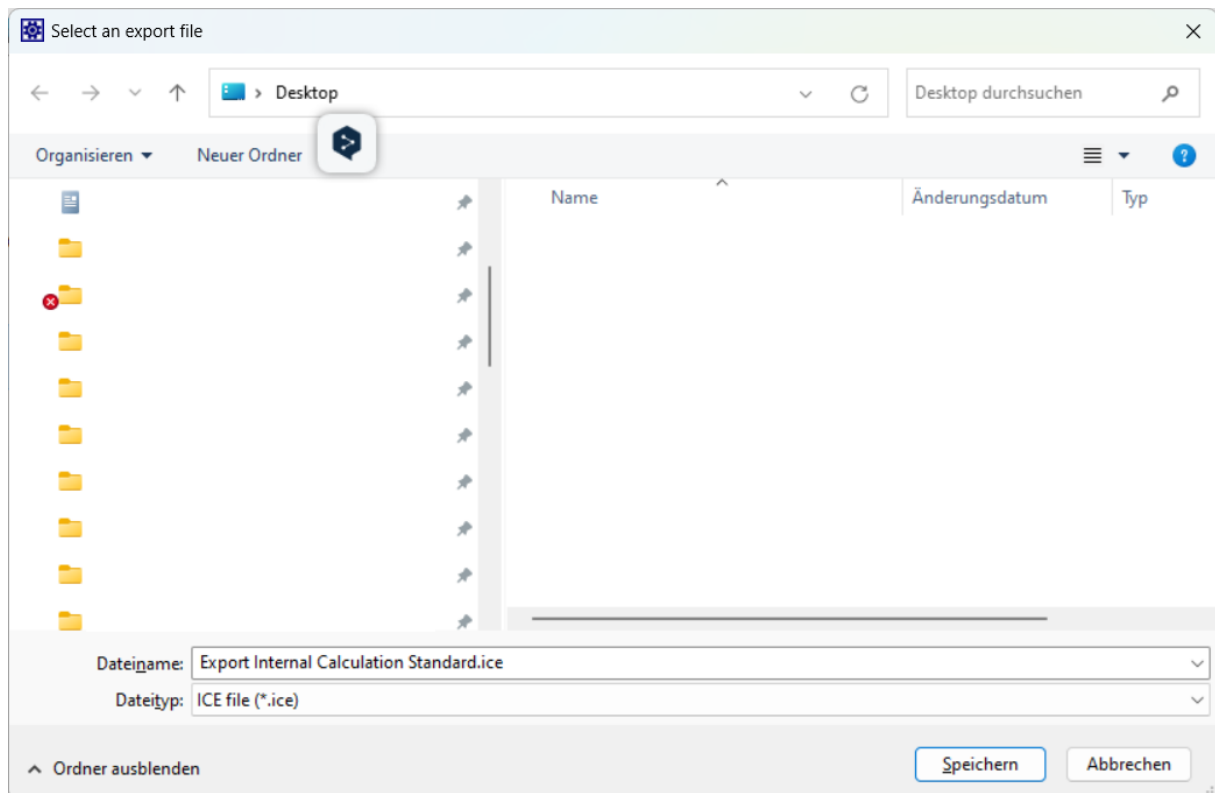
See also page 11 for an example.

Within the Services Manager, go to File > Export > Data transfer V8.0

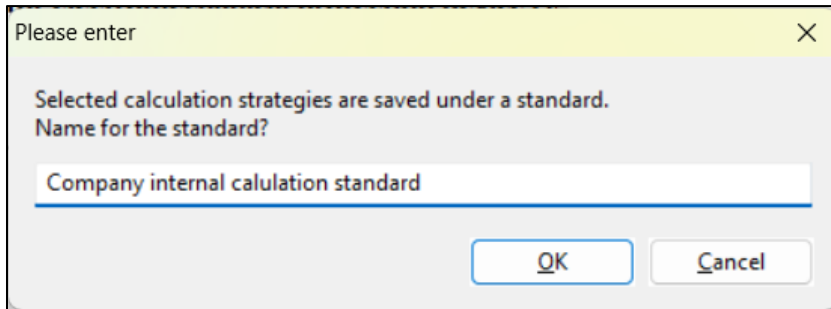


(If you have an earlier version than IQ-Software V7.0 – SP 0180 you might not be able to see “Data transfer V8.0”. In order to transfer you need to update to the latest service pack.)

Save the file where you can access it from your IQ-Software V8.0:

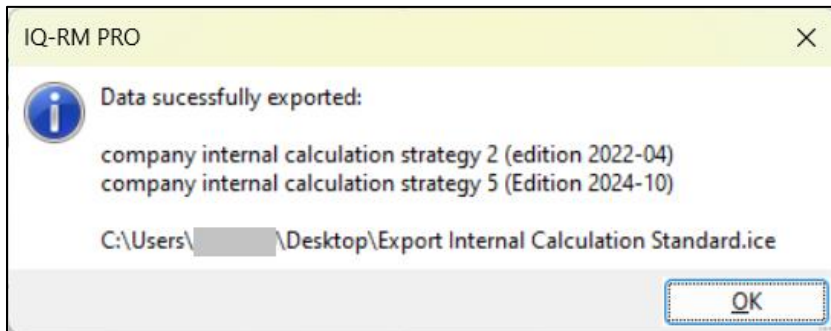


After saving, a prompt for naming the standard should appear. Name the exported standard. (If you wish to, you can still rename the standard later in the IQ-Software V8.0):



The export might take several minutes – a progress bar is shown in the Service Manager.

Then a prompt should confirm a successful export:



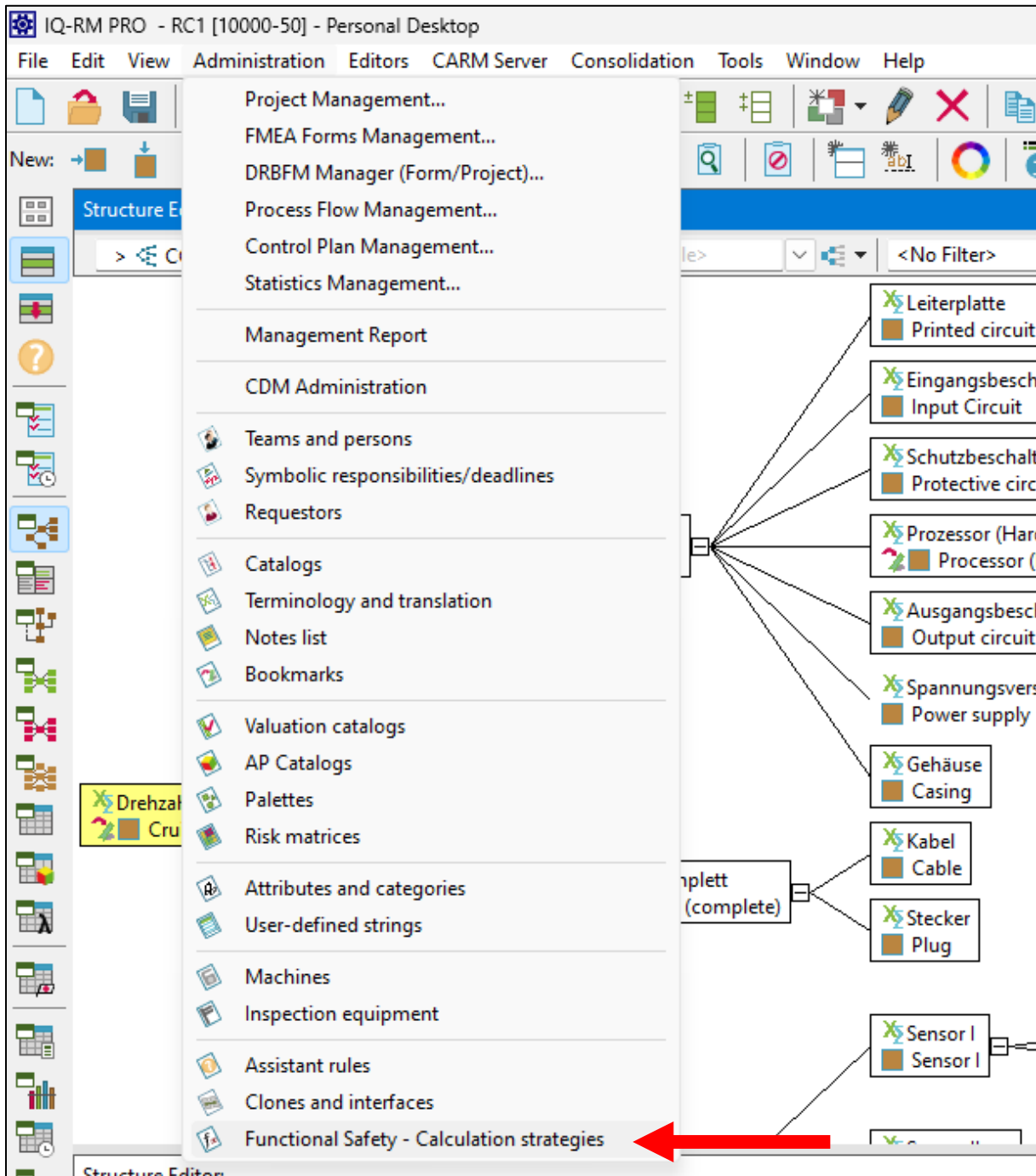
As mentioned above, you might want to export other calculation strategies now. This concludes the steps in the IQ-Software V7.0.

# Import into IQ-Software V8.0

## Data Manager

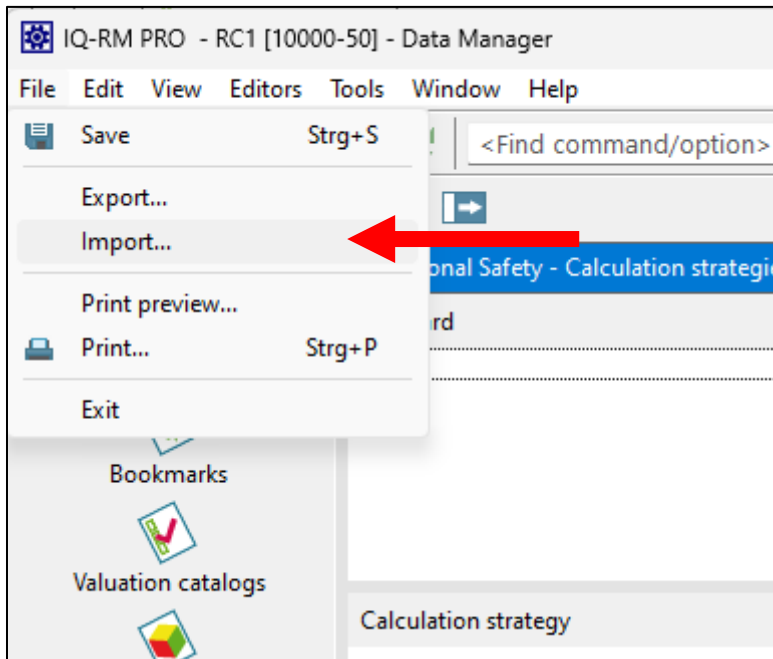
Make sure your APIS IQ-Software V8.0 is installed and started. The calculation strategies are now located in the Data Manager.

In the IQ-Software V8.0 go to Administration > Functional Safety - Calculation strategies:

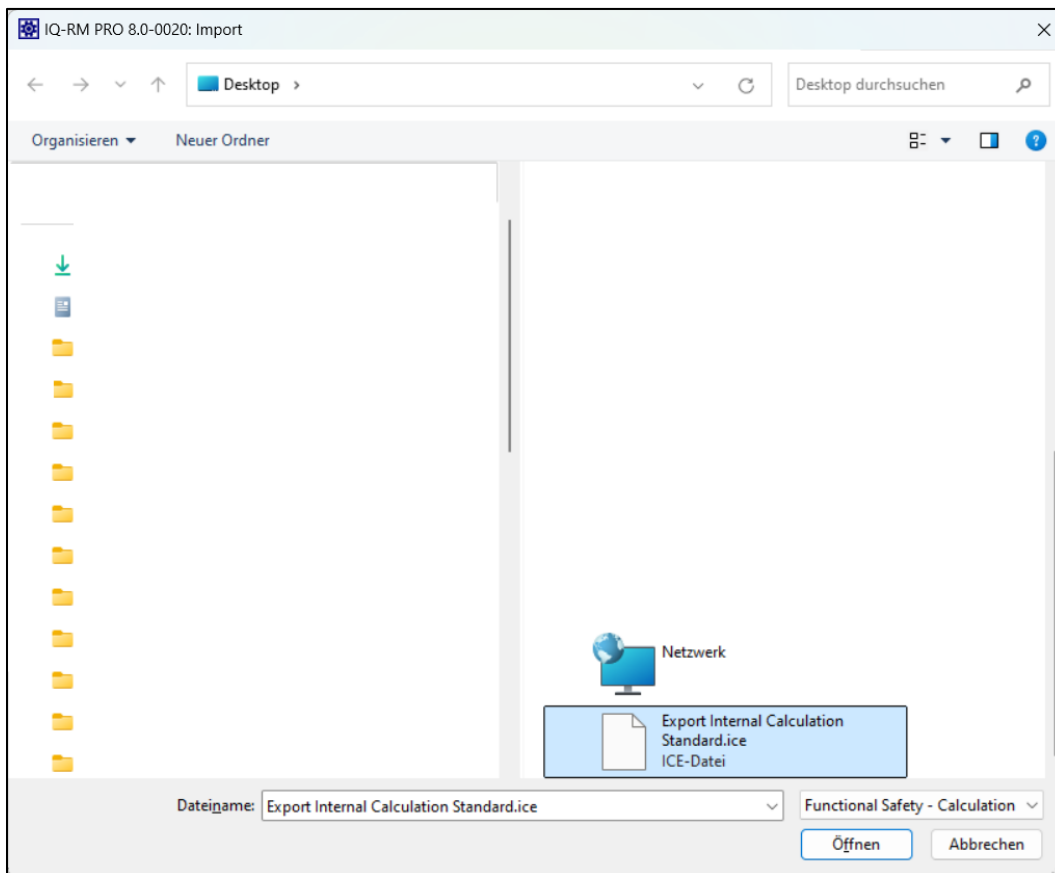




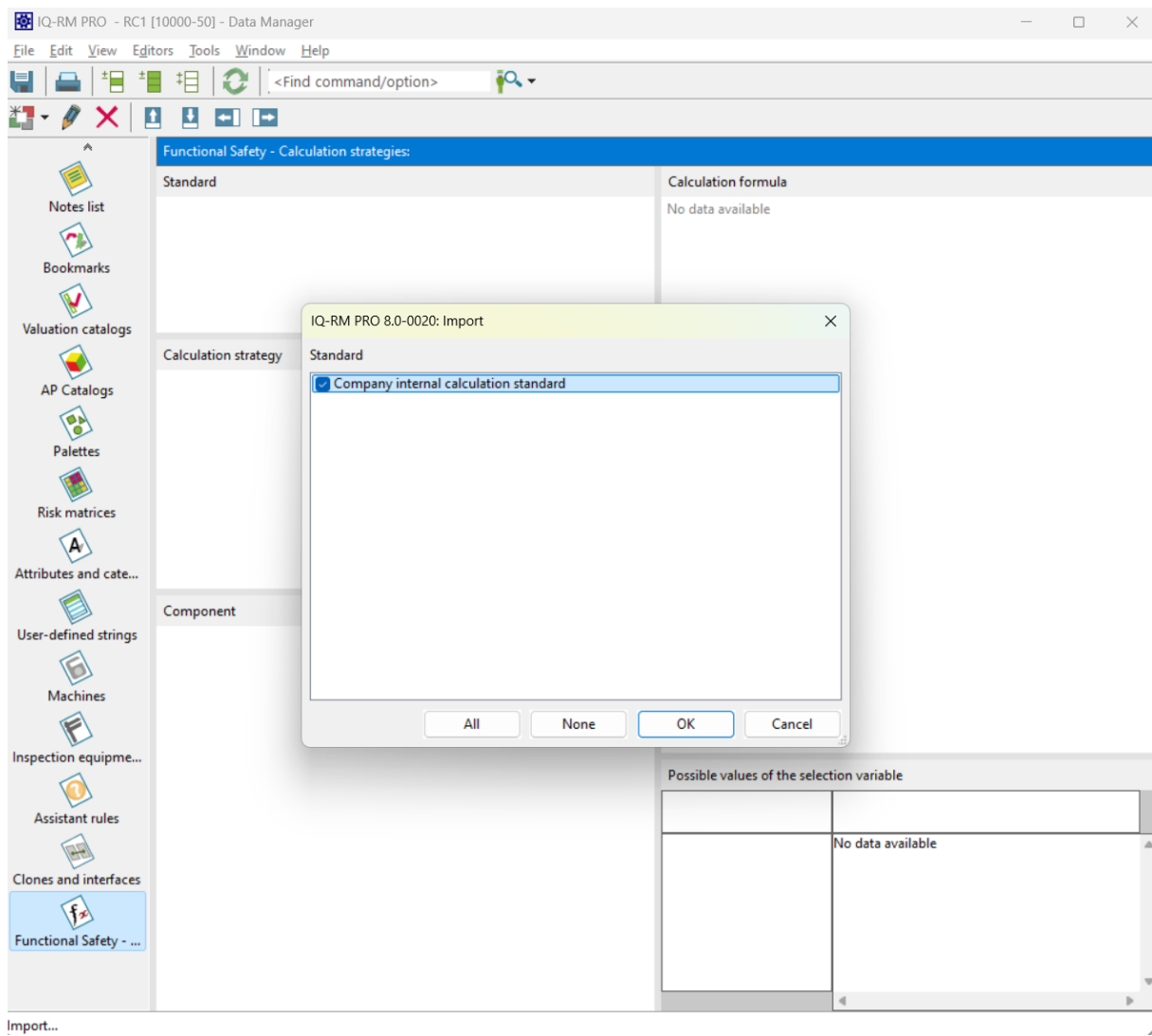
When in the Data Manager, go to File > Import:



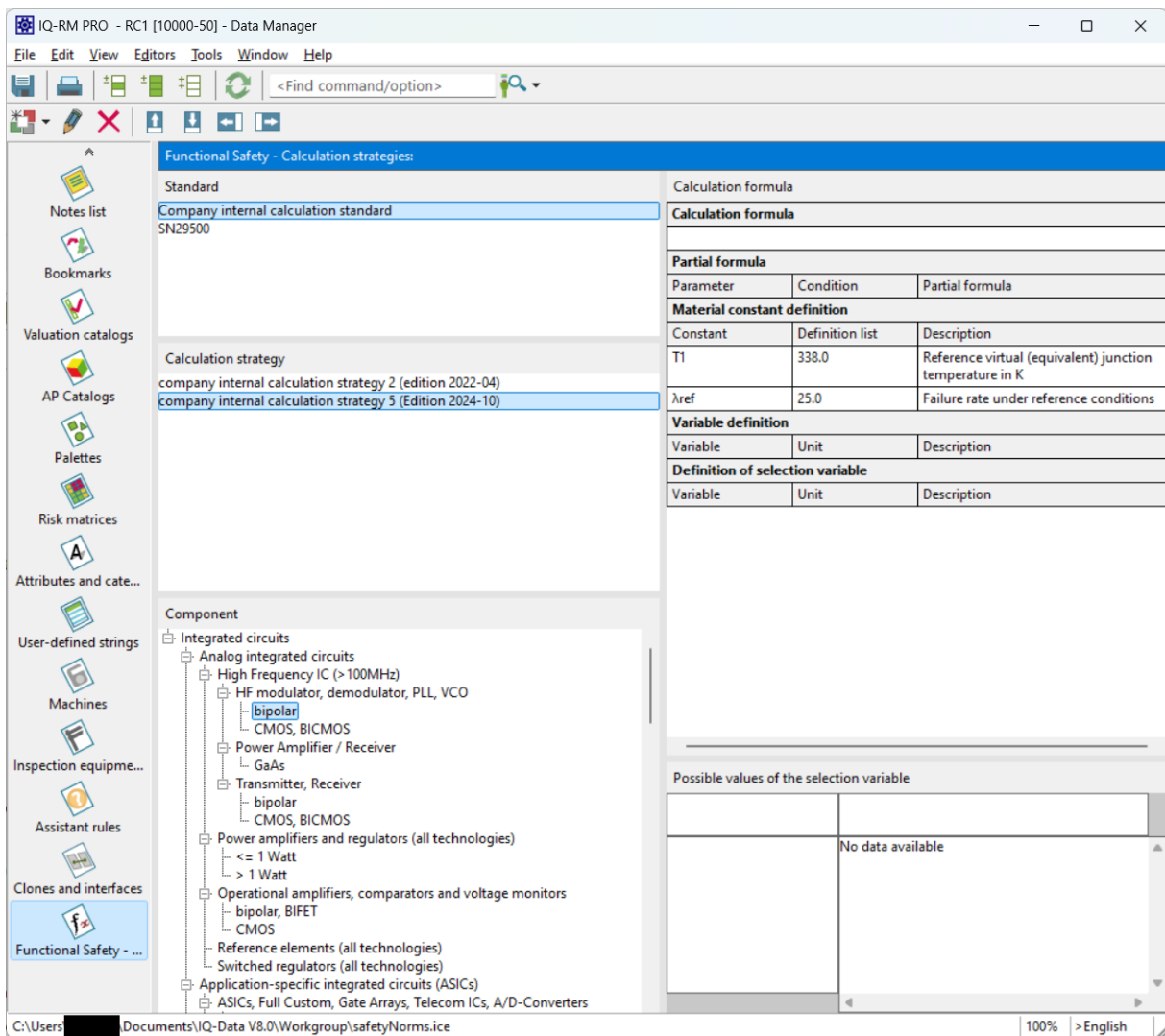
Choose the \*.ice file you previously exported from the CARM-NG.



The IQ-Software V8.0 now lets you choose the exported strategy. Select it and press OK:



The reimported standard then would look like this:



The imported standards are saved under a separate file (safetyNorms.ice) apart from your \*.fme files.

This step concludes the tutorial. You should be now able to use your calculation strategies.